



Insect Study

Merit Badge Workbook

This workbook can help you but you still need to read the merit badge pamphlet.

The work space provided for each requirement should be used by the Scout to make notes for discussing the item with his counselor, not for providing the full and complete answers. Each Scout must do each requirement.

No one may add or subtract from the official requirements found in **Boy Scout Requirements** (Pub. 33216 – SKU 34765).

The requirements were last issued or revised in 2009 • This workbook was updated in June 2012.

Scout's Name: _____ Unit: _____

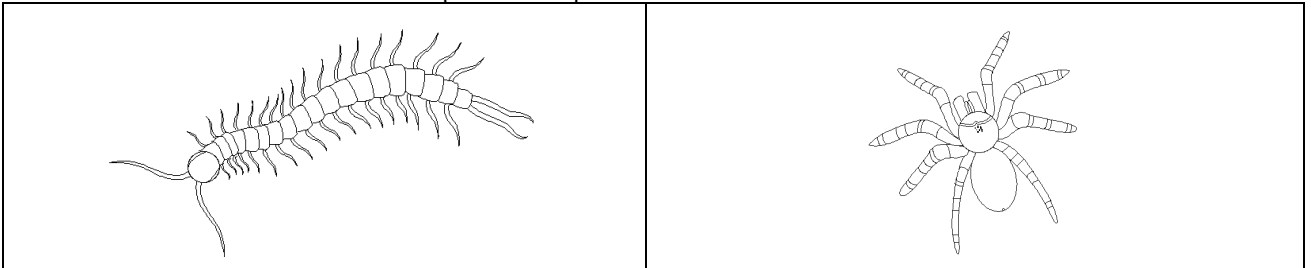
Counselor's Name: _____ Counselor's Phone No.: _____

<http://www.USScouts.Org> • <http://www.MeritBadge.Org>

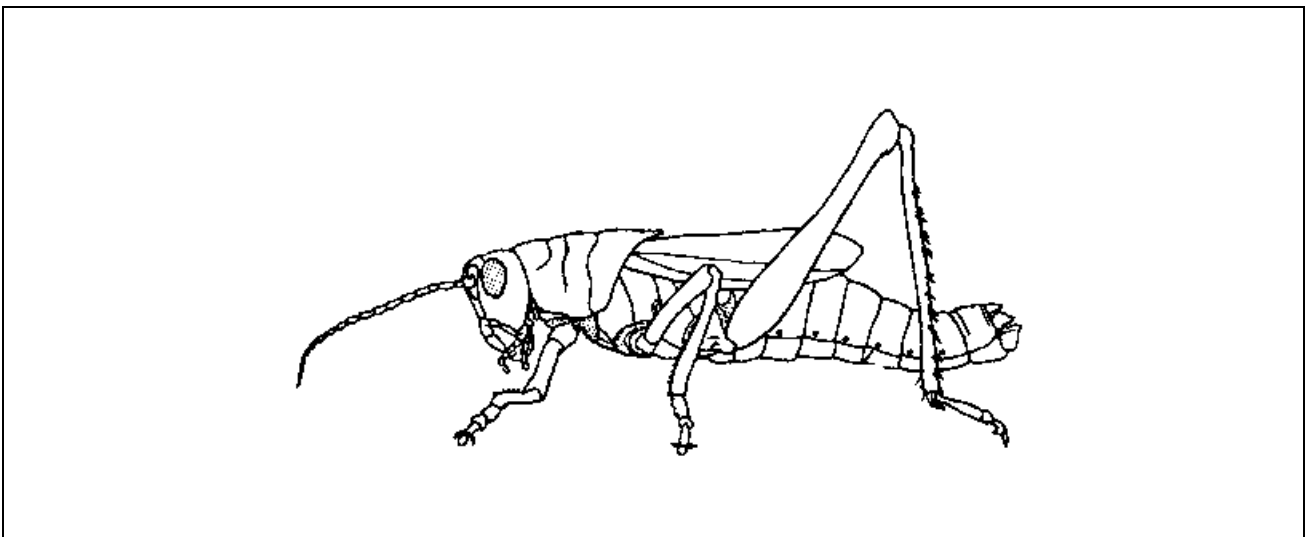
Please submit errors, omissions, comments or suggestions about this **workbook** to: Workbooks@USScouts.Org
Comments or suggestions for changes to the **requirements** for the **merit badge** should be sent to: Merit.Badge@Scouting.Org

1. Tell how insects are different from all other animals. _____

Show how insects are different from centipedes and spiders.



2. Point out and name the main parts of an insect.



6. Compare the life histories of a butterfly and a grasshopper. _____

Butterfly _____

Grasshopper: _____

Tell how they are different. _____

7. Raise an insect through the complete metamorphosis from its larval stage to its adult stage (e.g. raise a butterfly or moth from a caterpillar.)*

**Some insects are endangered species and are protected by federal or state law. Every species is found only in its own special type of habitat. Be sure to check natural resources authorities in advance to be sure that you will not be collecting any species that is known to be protected or endangered, or in any habitat where collecting is prohibited. In most cases, all specimens should be returned at the location of capture after the requirement is met. Check with your merit badge counselor for those instances where the return of these specimens would not be appropriate.*

8. Observe an ant colony or a beehive. Tell that you saw. _____

9. Tell the things that make social insects different from solitary insects. _____

10. Tell how insects fit in the food chains of other insects, fish, birds, and mammals. _____

11. Find out about three career opportunities in insect study.

1. _____

2. _____

3. _____

Pick one and find out about the education, training, and experience required for this profession. _____

Career: _____

Education: _____

Training: _____

Experience: _____

Discuss this with your counselor, and explain why this profession might interest you. _____

Requirement resources can be found here:
http://www.meritbadge.org/wiki/index.php/Insect_Study#Requirement_resources

Important excerpts from the [‘Guide To Advancement’](#), No. 33088:

Effective January 1, 2012, the *‘Guide to Advancement’* (which replaced the publication *‘Advancement Committee Policies and Procedures’*) is now the *official* Boy Scouts of America source on advancement policies and procedures.

- **[Inside front cover, and 5.0.1.4] — Unauthorized Changes to Advancement Program**
No council, committee, district, unit, or individual has the authority to add to, or subtract from, advancement requirements.
(There are limited exceptions relating only to youth members with disabilities. For details see section 10, “Advancement for Members With Special Needs”.)
- **[Inside front cover, and 7.0.1.1] — The [‘Guide to Safe Scouting’](#) Applies**
Policies and procedures outlined in the *‘Guide to Safe Scouting’*, No. 34416, apply to all BSA activities, including those related to advancement and Eagle Scout service projects. [Note: Always reference the online version, which is updated quarterly.]
- **[7.0.3.1] — The Buddy System and Certifying Completion**
Youth members must not meet one-on-one with adults. Sessions with counselors must take place where others can view the interaction, or the Scout must have a buddy: a friend, parent, guardian, brother, sister, or other relative —or better yet, another Scout working on the same badge— along with him attending the session. When the Scout meets with the counselor, he should bring any required projects. If these cannot be transported, he should present evidence, such as photographs or adult certification. His unit leader, for example, might state that a satisfactory bridge or tower has been built for the Pioneering merit badge, or that meals were prepared for Cooking. If there are questions that requirements were met, a counselor may confirm with adults involved. Once satisfied, the counselor signs the blue card using the date upon which the Scout completed the requirements, or in the case of partials, initials the individual requirements passed.
- **[7.0.3.2] — Group Instruction**
It is acceptable—and sometimes desirable—for merit badges to be taught in group settings. This often occurs at camp and merit badge midways or similar events. Interactive group discussions can support learning. The method can also be attractive to “guest experts” assisting registered and approved counselors. Slide shows, skits, demonstrations, panels, and various other techniques can also be employed, but as any teacher can attest, not everyone will learn all the material.

There must be attention to each individual’s projects and his fulfillment of *all* requirements. We must know that every Scout — actually and *personally*— completed them. If, for example, a requirement uses words like “show,” “demonstrate,” or “discuss,” then every Scout must do that. It is unacceptable to award badges on the basis of sitting in classrooms *watching* demonstrations, or remaining silent during discussions. Because of the importance of individual attention in the merit badge plan, group instruction should be limited to those scenarios where the benefits are compelling.

- **[7.0.3.3] — Partial Completions**
Scouts need not pass all requirements with one counselor. The Application for Merit Badge has a place to record what has been finished — a “partial.” In the center section on the reverse of the blue card, the counselor initials for each requirement passed. In the case of a partial completion, he or she does not retain the counselor’s portion of the card. A subsequent counselor may choose not to accept partial work, but this should be rare. A Scout, if he believes he is being treated unfairly, may work with his Scoutmaster to find another counselor. An example for the use of a signed partial would be to take it to camp as proof of prerequisites. Partials have no expiration except the 18th birthday.